

**REAL ESTATE  
AUCTION #1**

6781 Tippecanoe Rd., Unit #2. Main level condo with two bedrooms, kitchen, living room, two full baths, patio and one-car garage. HOA fees \$204.35.

**AUCTION #2**

6729 Tippecanoe Rd., Unit #6. Second level condo with one bedroom, kitchen, full bath, living room, dining room, deck, one-car garage. HOA fees \$102.

**AUCTION #3**

Tippecanoe Woods. .5350-acre lot. Corner of Tippecanoe Rd. & Linden Place with pond, utilities. HOA fees \$44.50 with amenities if you join the HOA.

**AUCTION #4**

.32-acre residential lot on Shields Rd. located just west of Tippecanoe Rd.

**NOTE**

Walk the lots at your convenience. Condos open sale day only after 3:30 PM.

**TERMS ON REAL ESTATE**

10% down auction day, balance due at closing. A 10% buyer's premium will be added to the highest bid to establish the purchase price. Any desired inspections must be made prior to bidding. All information contained herein was derived from sources believed to be correct. Information is believed to be accurate but not guaranteed. Property to be sold as Separate Parcels and not to be offered as an Entirety.

**Apartment Floor Plan** **AUCTION #2** *Sycamore Up*

**Sycamore Model**  
1121 Sq. Ft.

*This model features a single car garage, one large bath, beautiful arched windows, vaulted ceilings, private wood deck and unique angular kitchen with built-in snack bar. This popular unit is known for its spaciousness and flexibility and comes complete with all the things you'd expect plus a whole lot more!*

**Standard Features:**  
 • Large kitchen pantry  
 • All kitchen appliances  
 • Central air conditioning  
 • Oak doors and trim  
 • Huge walk-in closets  
 • Oak kitchen cabinets  
 • Vaulted living room  
 • High efficiency furnace  
 • Large private patio  
 • Garage with storage area  
 • Thick cut pile carpet  
 • Built-in snack bar  
 • Custom recess lighting  
 • Much, much, more...

RDW Company  
330-702-8787

**One bedroom flat up / 912 sq. ft.** *RDW Company*



**ABSOLUTE  
AUCTION**

THURSDAY, MAY 22, 2025, 5:30 PM



**Apartment Floor Plan** **AUCTION #1** *Rosewood Down*

**Rosewood PR-D Model**  
1138 Sq. Ft.

*This convenient first floor model features a single car garage, two full baths and a unique angular kitchen with built-in pantry. Although truly affordable, this unit still includes stunning arched windows, vaulted living room ceilings, private patio and much more...*

**Standard Features:**  
 • Large kitchen pantry  
 • All kitchen appliances  
 • Central air conditioning  
 • Oak doors and trim  
 • Huge walk-in closets  
 • Oak kitchen cabinets  
 • Vaulted living room  
 • High efficiency furnace  
 • Large private patio  
 • Garage with storage area  
 • Thick cut pile carpet  
 • Built-in snack bar  
 • Custom recess lighting  
 • Much, much, more...

RDW Company  
330-702-8787

**Two bedroom flat down / 1138 sq. ft.** *RDW Company*

**(2) HUNTINGTON  
RIDGE CONDOS &  
(2) VACANT LOTS**

 **RANDALL L. KIKO**  
AUCTIONEER/REALTOR  
330.831.0174  
randallkiko@kikocompany.com

**KIKO** REALTORS  
AUCTIONEERS  
ADVISORS

6781 TIPPECANOE RD.,  
CANFIELD, OH 44406

Information is believed to be accurate but not guaranteed  
KIKO Auctioneers

www.kikoauctions.com | 800.533.5456

**LIVE ONSITE WITH ONLINE BIDDING  
AVAILABLE**

- AUCTION HIGHLIGHTS**
- Auction #1: Two-Bedroom Condo With Garage
  - Auction #2: One-Bedroom Condo With Garage
  - Auction #3: .5-Acre Corner Lot In Tippecanoe Woods
  - Auction #4: Shields Rd. Lot
  - Canfield Schools & Township
  - Mahoning Co.



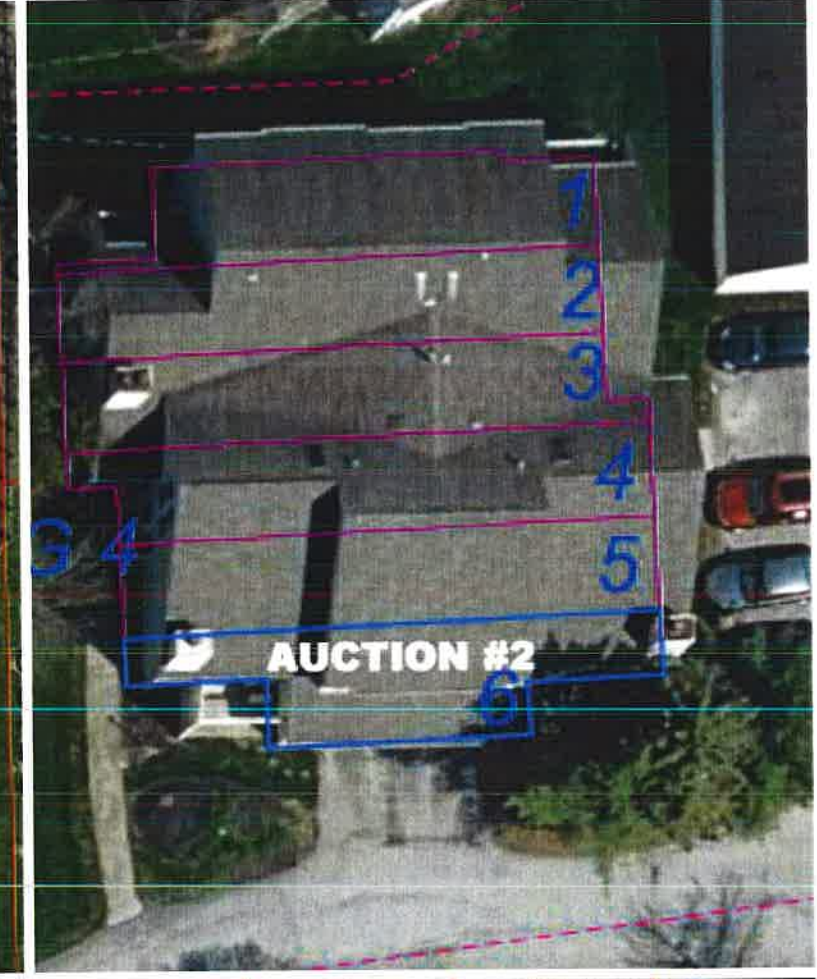
*Absolute Auction.  
All sells to the  
highest bidders  
on location.*



**AUCTION #1**



**AUCTION #2**



**AUCTION #2**



**AUCTION #3**



**AUCTION #3**



**AUCTION #3**